

Decorated Box

Items required:
 Box cut out (Sizzix Shaker)
 7cm acetate square
 Paper / Card Punches Circle, Star
 and Shamrock of various sizes.

Card in Raspberry, White, Blue
 and Gold.
 Foam pads 5mm square and 1mm
 thick.
 Double sided tape 6mm
 Scissors



Diagram 1



Diagram 2

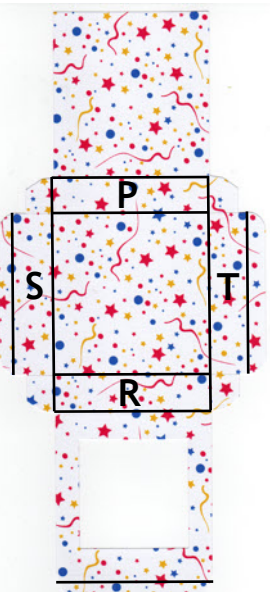


Diagram 3



Diagram 4

Instructions

Take your box cut out indented side up.

Stick a square of double sided tape on each of the tabs A, B, C, D in Diagram 1 - DO NOT PEEL OFF THE PROTECTIVE BACKING YET.

Turn over your box cut out and apply double sided tape at E, F, G, H around the hole X as in Diagram 2 Peel off the backing and stick the acetate square over the hole.

DO NOT TURN OVER your box cut out. Now fold and crease along the indented lines marked in black in Diagram 3.

Now see Diagram 4 - peel the backing of the tape on tab A fold up sides P & S and stick A to point N, tab C fold up side R and stick C to point M, tab B fold up side T and stick to point K, tab D and stick to point L.

You should now have a box like Diagrams 5, 6, 7. Now fold down W and tuck tab Z into Y. V now forms the lid / cover for your box.

Select various punched elements to decorate the outside of your box stick them on using foam pads .

You can now open the box by untucking tab Z and putting small items inside.

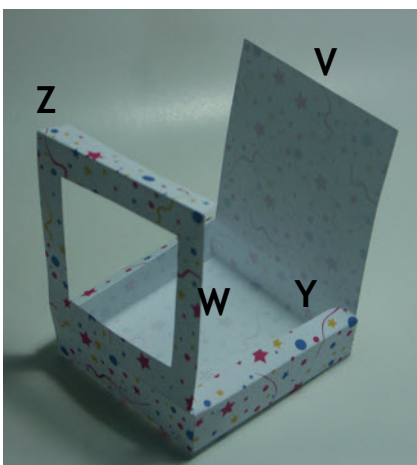


Diagram 5

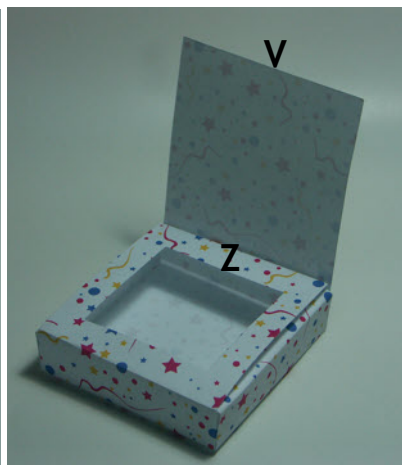


Diagram 6



Diagram 7